

Light efficiency:

110 Lumen/Watt

Color temperature:

3013 K

Light quality:

CRI:95.7, R<sub>g</sub>:92.8, R<sub>f</sub>:101.7

P: 2 / V: - / F: 2

Output: 1604 lm

Peak: 576 cd

Power: 14.6 W

Voltage: 120 V

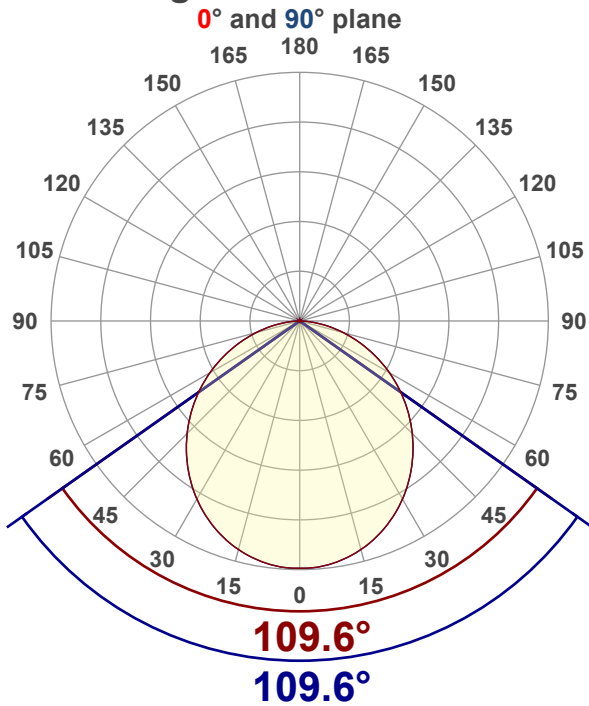
Current: 0.125 A

PF: 0.98

THD: 15.76 %



Angular Distribution



Product name:

SLM6-16W-CCT-WH - 3000K

Test Date:

11/27/2025

Beam Angle (50% of the brightness of the centre):

109.6°

Field Angle (10% of the brightness of the centre):

161.6°

Cut Off Angle (2.5% of the brightness of the centre):

174.8°

Beam Details

\*measured at centre of beam

Mounting Height (feet)\(meter)	Lux*	Footcandles*	Beam width (feet) / (meter)
4 ft / 1.2 m	388 lx	36 fc	11.3 ft / 3.5 m
8 ft / 2.4 m	97 lx	9 fc	22.7 ft / 6.9 m
12 ft / 3.7 m	43 lx	4 fc	34 ft / 10.4 m
16 ft / 4.9 m	24 lx	2 fc	45.4 ft / 13.8 m
20 ft / 6.1 m	16 lx	1 fc	56.7 ft / 17.3 m

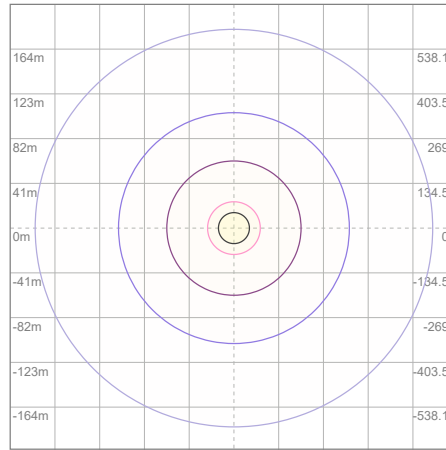
Beam center

## Photometric Testing Report

## Zonal Lumen Summary

Zone	Lumen	%Luminaire
0-30	444	27.68%
0-40	723	45.07%
0-60	1265	78.87%
60-90	338	21.07%
70-100	145	9.04%
90-120	1.10	0.07%
0-90	1602	99.88%
90-180	1.80	0.11%
0-180	1604	100.00%

## ISO Lux Diagram



Lux at center:	62 lx
3%	1.86 lx
5%	3.10 lx
10%	6.20 lx
30%	18.60 lx
50%	31.00 lx

**Conditions:**  
 Number of planes: 8  
 Lux distribution on a surface when lamp is mounted at 3.05 meters from the surface.

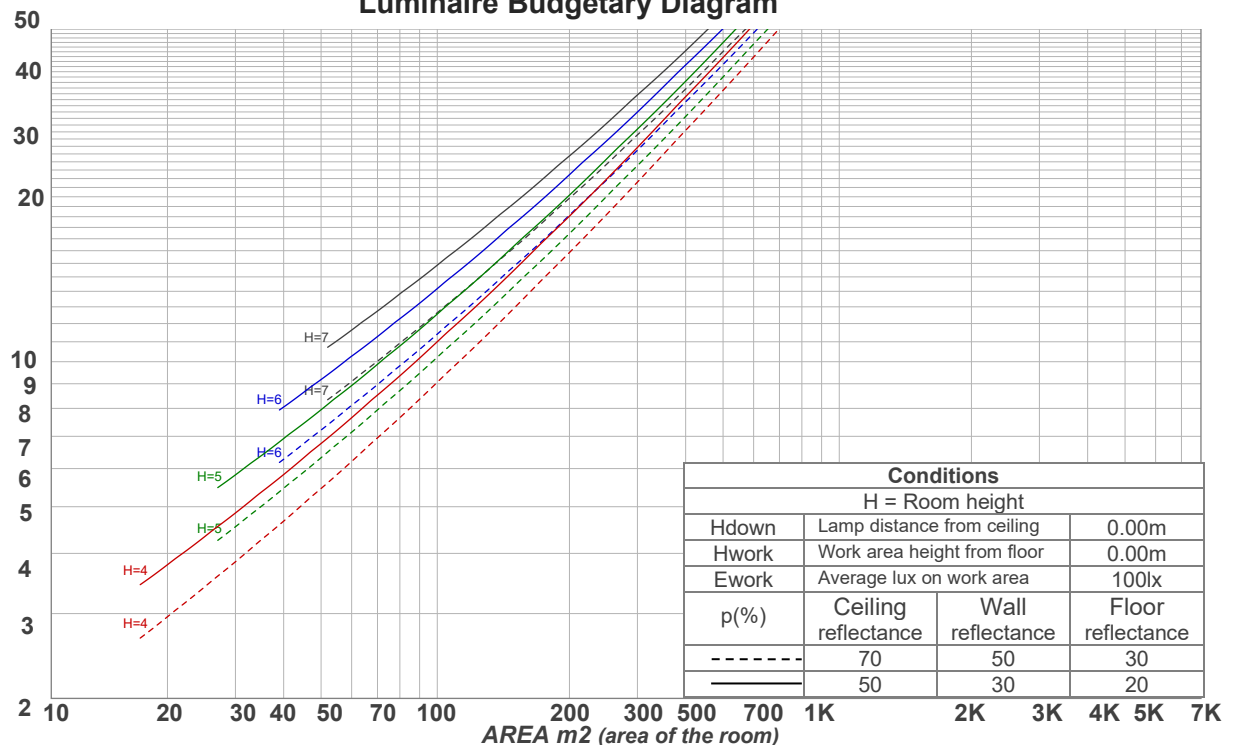
Mounting height: 3.05 meters (10 feet)

## Coefficients of Utilization

Ceiling reflectance	80				70				50			30			10			0
Wall reflectance	70	50	30	10	70	50	30	10	50	30	10	50	30	10	50	30	10	0
Floor reflectance	20	20	20	20	20	20	20	20	20	20	20	20	20	20	20	20	20	0
RCR	(RCR: Room Cavity Ratio) Room Values are expressed as percentage of Lumens delivered to the task surface																	
0	119	119	119	119	116	116	116	116	111	111	111	106	106	106	102	102	102	100
1	109	104	100	96	106	102	98	94	97	94	91	93	91	88	90	88	86	84
2	99	91	84	78	96	89	82	77	85	80	75	82	77	73	79	75	72	70
3	90	79	71	65	88	78	70	64	75	68	63	72	67	62	70	65	61	59
4	82	70	62	55	80	69	61	54	67	59	54	64	58	53	62	57	52	50
5	76	63	54	47	74	62	53	47	60	52	46	58	51	46	56	50	45	43
6	70	57	48	41	68	56	47	41	54	46	41	52	45	40	51	45	40	38
7	65	51	43	36	63	51	42	36	49	42	36	48	41	36	46	40	35	33
8	60	47	38	33	59	46	38	32	45	37	32	44	37	32	42	36	32	30
9	57	43	35	29	55	42	35	29	41	34	29	40	34	29	39	33	29	27
10	53	40	32	27	52	39	32	26	38	31	26	37	31	26	36	30	26	24

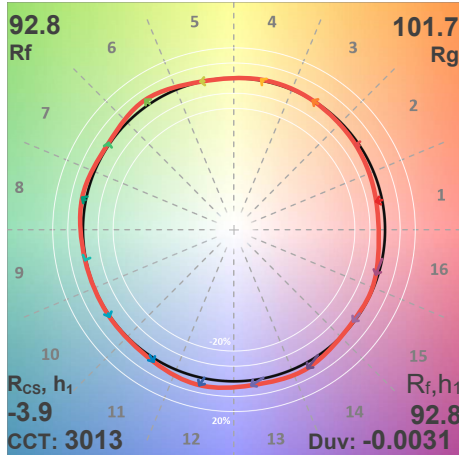
LAMPS (number of lamps)

## Luminaire Budgetary Diagram

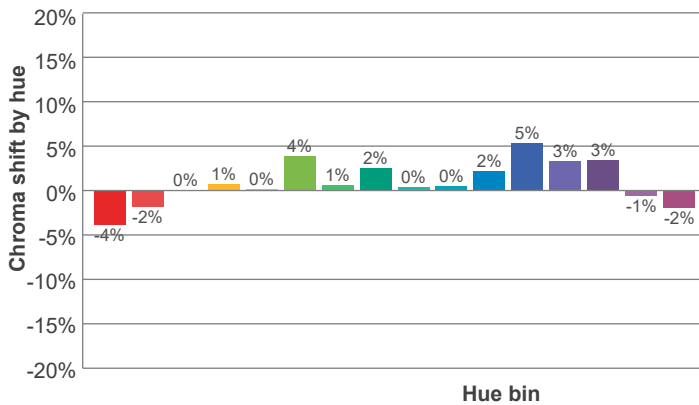
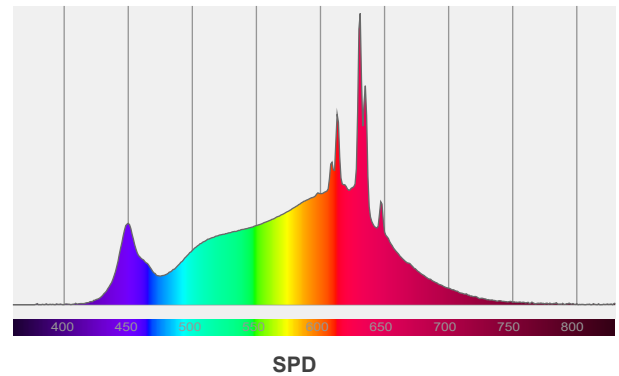
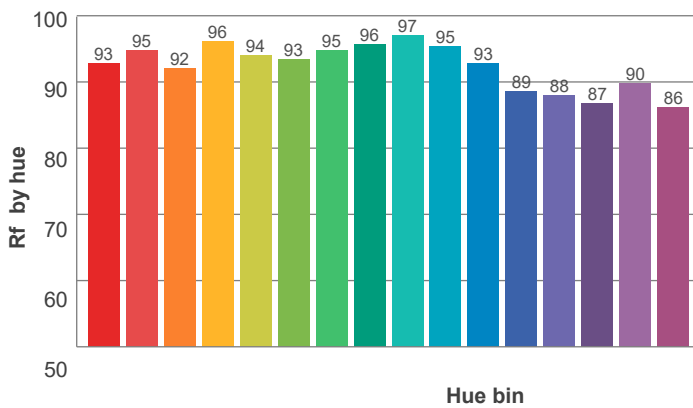
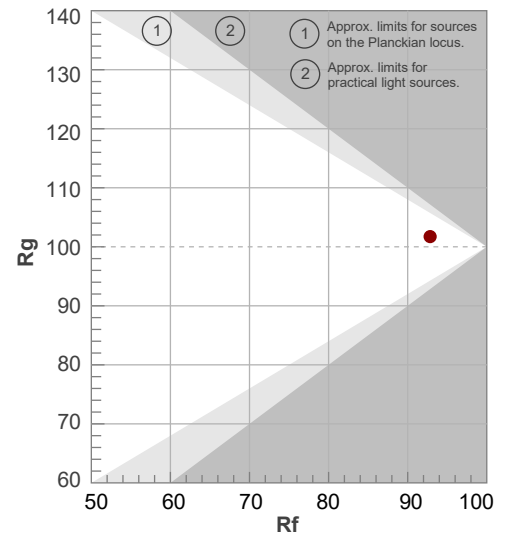


ANSI/IES TM-30-18

P: 2 / V: - / F: 2



Hue Bin	R <sub>f</sub>	Shifts (%)	
		Chroma	Hue
1	93	-4%	0%
2	95	-2%	2%
3	92	0%	4%
4	96	1%	2%
5	94	0%	2%
6	93	4%	1%
7	95	1%	-2%
8	96	2%	-1%
9	97	0%	1%
10	95	0%	2%
11	93	2%	4%
12	89	5%	-2%
13	88	3%	-9%
14	87	3%	-10%
15	90	-1%	-7%
16	86	-2%	-11%



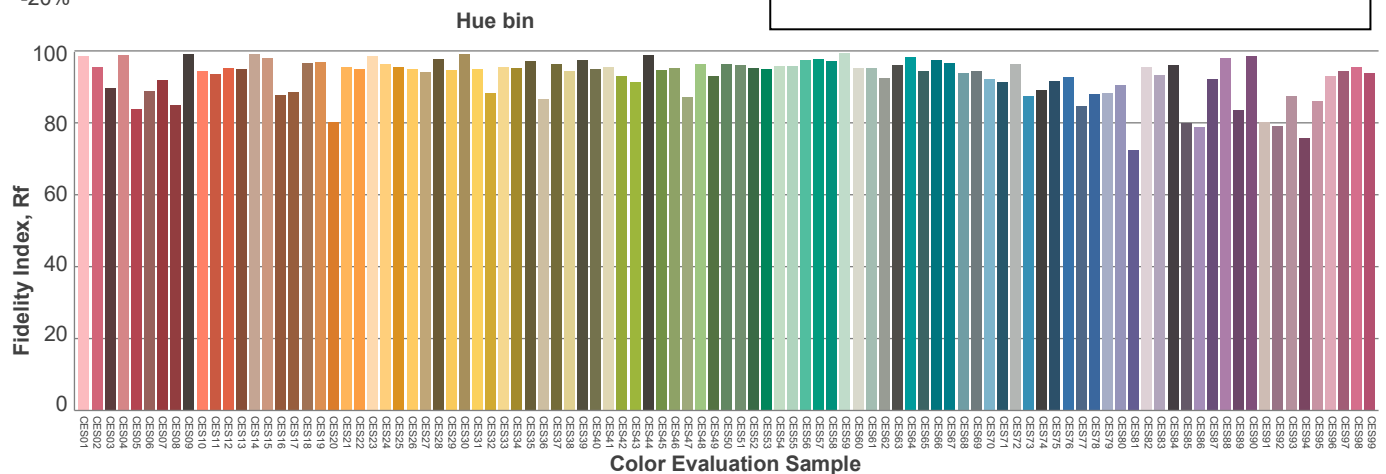
Red: 31.2%, Power=7.4mW

Blue: 9.7%, Power=7.9mW

Green: 27.2%, Power=18.8mW

UVA: 0%, Power=0.0mW

Dominant Wavelength: 585nm

1<sup>st</sup> Peak Wavelength: 631nm2<sup>nd</sup> Peak Wavelength: 613nm

## Glare Evaluation According to UGR

p Ceiling		70	70	50	50	30	70	70	50	50	30
p Walls		50	30	50	30	30	50	30	50	30	30
p Floor		20	20	20	20	20	20	20	20	20	20
Room size X      Y		Viewing direction at right angles to lamp axis					Viewing direction parallel to lamp axis				
2H	2H	25.8	27.0	26.0	27.3	27.5	25.8	27.0	26.0	27.3	27.5
	3H	27.2	28.5	27.6	28.7	28.9	27.2	28.5	27.6	28.7	28.9
	4H	27.8	29.0	28.2	29.3	29.6	27.8	29.0	28.2	29.3	29.6
	6H	28.4	29.4	28.7	29.7	30.1	28.4	29.4	28.7	29.7	30.1
	8H	28.5	29.5	28.9	29.8	30.3	28.5	29.5	28.9	29.8	30.3
	12H	28.6	29.6	29.0	29.9	30.4	28.6	29.6	29.0	29.9	30.4
4H	2H	26.3	27.6	26.8	27.8	28.1	26.3	27.6	26.8	27.8	28.1
	3H	28.1	29.1	28.5	29.5	29.9	28.1	29.1	28.5	29.5	29.9
	4H	28.8	29.7	29.2	30.1	30.7	28.8	29.7	29.2	30.1	30.7
	6H	29.4	30.3	29.9	30.6	31.0	29.4	30.3	29.9	30.6	31.0
	8H	29.6	30.4	30.1	30.8	31.1	29.6	30.4	30.1	30.8	31.1
	12H	29.7	30.4	30.2	30.8	31.3	29.7	30.4	30.2	30.8	31.3
8H	4H	29.1	29.9	29.6	30.3	30.7	29.1	29.9	29.6	30.3	30.7
	6H	29.8	30.5	30.3	30.9	31.5	29.8	30.5	30.3	30.9	31.5
	8H	30.2	30.7	30.7	31.2	31.9	30.2	30.7	30.7	31.2	31.9
	12H	30.4	30.8	30.9	31.3	31.9	30.4	30.8	30.9	31.3	31.9
12H	4H	29.1	29.8	29.6	30.2	30.7	29.1	29.8	29.6	30.2	30.7
	6H	29.9	30.5	30.4	31.0	31.6	29.9	30.5	30.4	31.0	31.6
	8H	30.3	30.7	30.8	31.2	31.8	30.3	30.7	30.8	31.2	31.8
Variation of the observer position for the luminaire distance S											
S = 1.0H		0.1 / -0.1					0.1 / -0.1				
S = 1.5H		0.1 / -0.2					0.1 / -0.2				
S = 2.0H		0.4 / -0.5					0.4 / -0.5				
Standard table		n/a					n/a				
Correction summand		n/a					n/a				
Corrected glare indices referring to 1604 lm total luminous flux											